

## Festivals

### PATRON SAINT FESTIVALS

#### Fiesta of San Juan Bautista

24<sup>th</sup> June

#### Fiesta of San Gregorio Taumaturgo

17<sup>th</sup> November

### POPULAR FIESTAS

#### Come to summer in Telde Campaign

Summer

#### Fiesta of La Traída del Agua (Bringing of the water)

15<sup>th</sup> August

#### Fiesta of Santo Cristo de Telde

14<sup>th</sup> September

#### Fiesta of La Caña Dulce o la Concepción

8 December



Fiesta de La Traída del Agua.



CASA CONDAL  
Tourist Information Office

Calle Conde de la Vega Grande, N° 9.

Tel: 828 013 312

turismo@telde.es

www.teldeturismo.es



Gran Canaria

Gran Canaria Tourist Board

Triana, 93

35002 Las Palmas de Gran Canaria

Tel: (+34) 928 219 600

Fax: (+34) 928 219 601

mygrancanaria

turismogc

visitgrancanaria

www.grancanaria.com

# TELDE

## Cuisine



### TYPICAL PRODUCTS FROM THE MUNICIPALITY

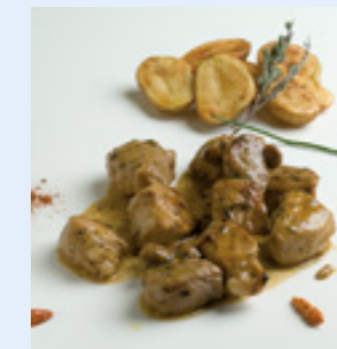
Roast leg of pork

Sweet potato *Truchas* and *Cabello del Ángel*

Gofio maize meal

## Typical Recipe

### Marinated Fried Pork



#### INGREDIENTS

1 kg. of fried pork  
6 cloves of garlic  
Salt  
2 spoonfuls of paprika  
Spicy pepper  
1 glass of white wine  
Vinegar  
Olive Oil  
Thyme  
Oregano

#### PREPARATION

The meat is cut up into small chunks and is seasoned with oregano and thyme for one hour. In a pestle the marinade is prepared, with the garlic, sea salt, spicy paprika, a little pepper, white wine, a splash of olive oil and another splash of vinegar. The marinade is then poured onto the meat and is left for a few hours. At this point the meat chunks are fried and then placed into a pot with the previously boiled marinade.

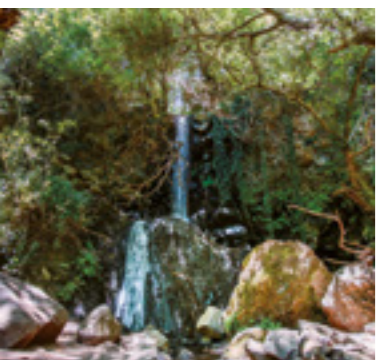


MUNICIPALITIES OF GRAN CANARIA





Situated to the southeast of Gran Canaria, Telde is just 13 kilometres from the island's capital, Las Palmas de Gran Canaria, southwards down the motorway.



Barranco de los cernicalos.

## Did you know?

Along this ravine, one of the most visited ones on the island, with its stunning orography which stretches out for around 12 kms, water runs throughout the year forming cascades and gorges along the way.

We suggest visitors start their day with a hearty breakfast in any one of the many cafeterias in the bustling district of San Gregorio before embarking on a pleasant stroll around this busy area of town.

First stop is at the **Church** to have a look at the numerous altarpieces and work of famed Gran Canarian religious sculptor **Luján Pérez**. As we make our way round this part of town we are sure to succumb to some of the delights on sale at the **traditional shops**, with their exquisite customer service.

We then move on to the **town's founder site of San Juan**, the present day administrative and judicial centre in the municipality. This borough with its **stately town houses** makes our stroll a highly gratifying one thanks to the wealth and variety of the architecture of the houses and other buildings on show, that combine a simple **Mudejar** style together with the other styles. We propose you spend just a little time at the **Alameda and Basilica of San Juan Bautista**, where you will find a wide variety of works of art, namely **the Santísimo Cristo de Telde** on the main altar, originally from Mexico and made



Barcas en Tufia.



Artistic Historic District of San Francisco.

out of corn cob paste, as well as the 16<sup>th</sup> century **Gothic Flemish Alterpiece**.

Another place not to be missed is the **Case Museo de León y Castillo** museum, again with an eye-catching collection of art and personal belongings of the man himself and the key role he played in the history of the archipelago. Before leaving this part of town we suggest stopping off and taking a deep breath at the **Rincón Plácido Fleitas**, a common meeting place for neighbours and visitors.

We round off our morning by making our way into the **Artistic Historical District of San Francisco**, where we can walk around narrow cobblestone streets all the way up to the aqueduct and into one of the oldest districts in the Canaries.

Among its streets, where time seems to have stopped, we can get a pleasant view of the **Convent Church of San Francisco**, in whose interior we can marvel at numerous pieces of baroque style art, and religious sculptures of diverse styles.

Before we set out on our afternoon visits to some interesting archaeological settlements, we must first build our strength up with a spot of lunch, either from a wide choice of seafood dishes at our disposal in one of the **restaurants** on the **Telde coastline**, or alternatively at one of the cozy restaurants with **succulent home made food in the interior of the municipality**.

We propose the following route to get to know the archaeological heritage of

### How to Get There

**BY BUS FROM LAS PALMAS DE GRANCANARIA**  
**Service 12** departures every half hour.  
**Service 80** departures about every 20 Minutes.

**FROM MASPALOMAS**  
**Service 36 and 90:** departures every hour.



Salinetas Beach.



El Neptuno, Melenara Beach.



Cuatro puertas.

the municipality: **Cuatro Puertas** – near the town centre, **Tara** – in the interior of the municipality, and **Tufia**, on the coast. In all cases, our visits will reveal many untold secrets about the Ancient Aborigines of Gran Canaria, since Telde treasures an archaeological heritage that captivates both the islanders and visitors alike.

To finish off our fantastic day, we can look out and see the **dusk fall** at the **coast**, while we take one last stroll along the coastal promenade, or simply take in the spectacle of the sea opposite the **Bufadero de La Garita**.